

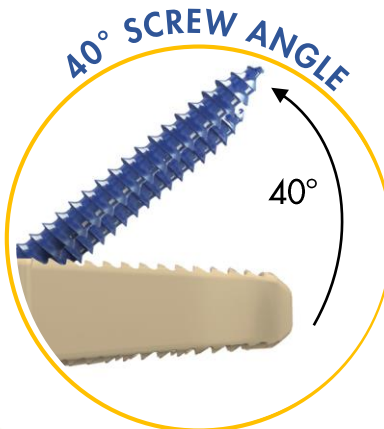
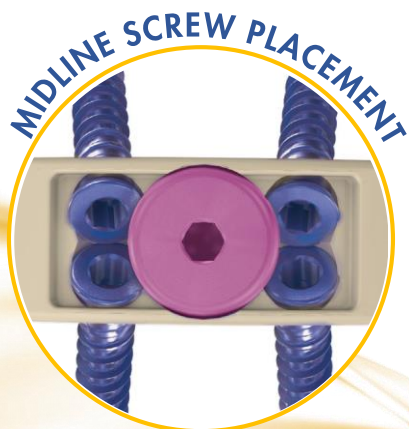
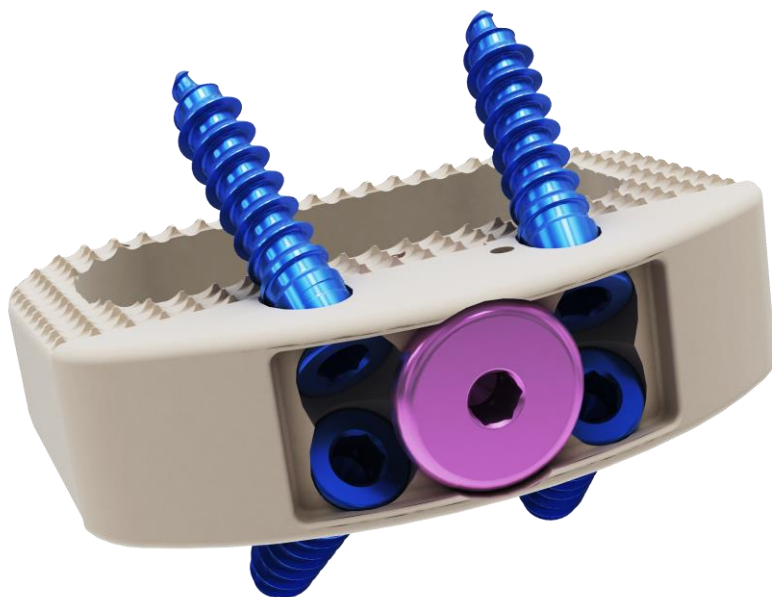
# PRECISION SPINE VAULT® ALIF SYSTEM

## SUPERIOR ENGINEERING DESIGN

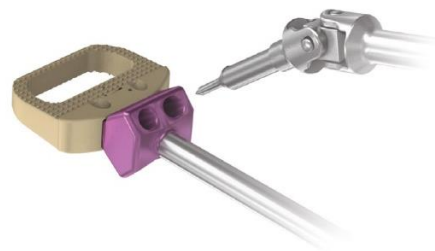
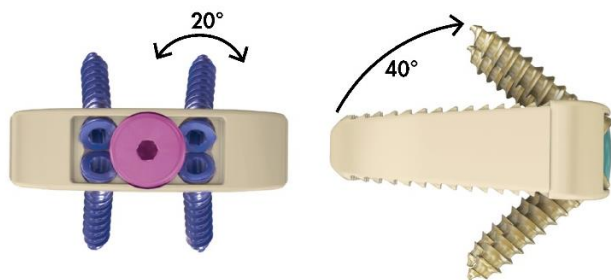
Vault® is a zero profile, ALIF system offering midline screw placement to enable easier access, reduced retraction of the neural elements and precise screw placement.

The modular plate and cage construct offers two footprints with 8° and 15° lordotic angles to assist in reproducing the patient's sagittal profile while providing anterior column support.

The system features four points of divergent, lag screw fixation to allow for compression of the interbody along with a large bone graft window to promote fusion.



# VAULT® ALIF SYSTEM

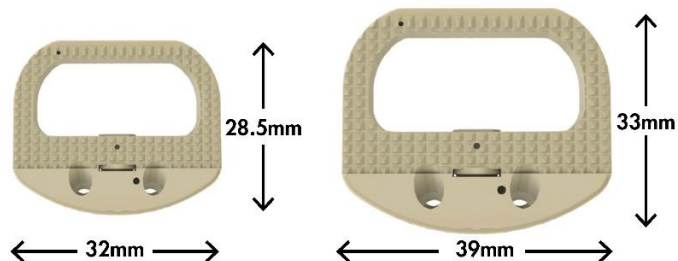


**Midline Screw Placement** with  $\pm 10^\circ$  angulation, aids optimal access and solid fixation.

**Single Step Locking Cap** reduces the risk of screw back-out.

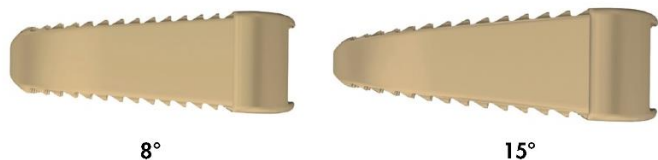
**40° Screw Angle** resists expulsion forces.

**Install Guide Block** facilitates easier vertebral body access for simple, precise screw placement.



**Large Bone Graft Window** features a significant crosssectional area for placement of bone graft material.

**Vault System** with adjunctive **SureLOK™ Pedicle Screw System**.



**8° and 15° Lordotic Options** address anatomical requirements.

## Vault Implant Sizing

Plate and Cage	Heights	Lordotic Angles	Screw Sizes
32 x 28.5mm	11mm	8°	25mm
39 x 33mm	13mm	15°	30mm
	15mm		35mm
	17mm		
	19mm		

## Precision Spine, Inc.

2050 Executive Drive, Pearl, MS 39208

Customer Service: 1.888.241.4773

Phone: 601.420.4244

Toll Free: 877.780.4370

Fax: 601.420.5501

www.precisionspineinc.com

Caution: Federal (USA) law restricts these devices to sale by, or on the order of, a physician.

PEEK-OPTIMA® polymer from Invibio®

Vault® and Precision Spine® are trademarks of Precision Spine, Inc.

Copyright 2018 Precision Spine, Inc. All rights reserved. P/N LBL-FB-007 Rev D 07/2018

