

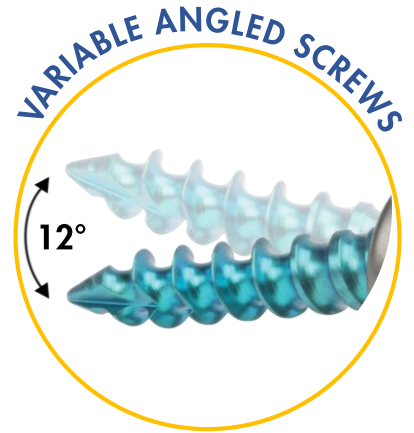
PRECISION SPINE
AccuFit[®]
ALIF PLATE SYSTEM

VISUAL LOCKING CONFIRMATION

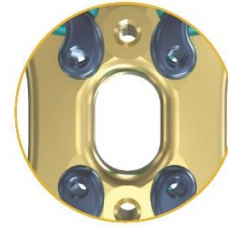
The AccuFit[®] ALIF Plate System is a lumbosacral fixation system offering two low profile plate designs to facilitate anatomical fit and protect surrounding vascular structures.

The AccuFit Plate features an intuitive one step locking system that provides visual locking confirmation and a large graft window for extensive visibility to the endplates, as well as the interbody spacer.

Fixed and variable screws in 5.0 and 5.5mm sizes are offered to accommodate surgical preferences.

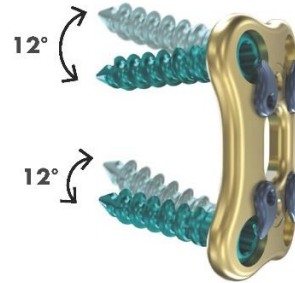
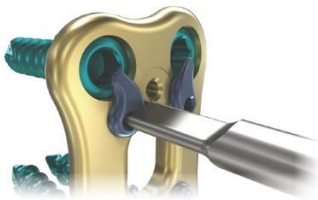


ACCUFIT® ALIF PLATE SYSTEM



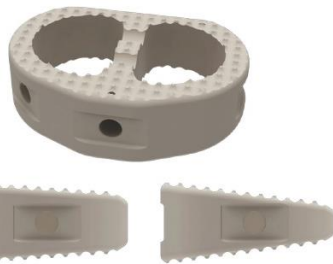
- Low Profile Design (3.8mm) reduces tissue disruption.
- Pre-Lordosed L5-S1 Plate contours to sacral anatomy to reduce vascular complications.

- Large Graft Window allows for excellent visualization of interbody and endplates.



- Intuitive Single Step Locking Mechanism is designed to facilitate secure placement of the plate.

- Fixed and Variable Screws available to accommodate surgeon preference.



- 3 Points of Insertion facilitate anterior, anterolateral and direct lateral insertion.
- Anatomical Shape & Central Strut provides a large surface area for anterior column support.
- Large Graft Windows allow for a large volume of biological ingrowth.

Variable Ø5.0mm



Fixed Ø5.0mm



Variable Ø5.5mm



Fixed Ø5.5mm



SIZING:

- Widths – 26, 32 & 39mm
- Heights – 9 to 21mm (2mm increments)
- Lordosis – 8° & 15°

AccuFit Implant Sizing

Plate Lengths (end to end)	Variable & Fixed Screws	Screw Lengths	Screw Diameters
21mm	5.0mm – 12° Cone	25mm	5.0mm
23mm	5.5mm – 6° Cone	30mm	5.5mm
25mm		35mm	
27mm			

Precision Spine, Inc.

2050 Executive Drive, Pearl, MS 39208
 Customer Service: 1.888.241.4773
 Phone: 601.420.4244
 Toll Free: 877.780.4370
 Fax: 601.420.5501
www.precisionspineinc.com



CE2797