

PRECISION SPINE  
**Reform<sup>®</sup> Ti**  
TITANIUM PEDICLE SCREW SYSTEM

### VERSATILITY & VISIBILITY

The Reform<sup>®</sup> Ti Pedicle Screw System provides surgeons increased flexibility, versatility and visibility to meet the varying requirements of degenerative and trauma procedures. Reform Ti features a titanium tulip, and triple lead thread to deliver strength, stability and efficiency to all thoracolumbar constructs. A more aggressive, self starting thread tip and a T25 drive feature allows for more immediate bone engagement, reliable insertion and maximum control during insertion.



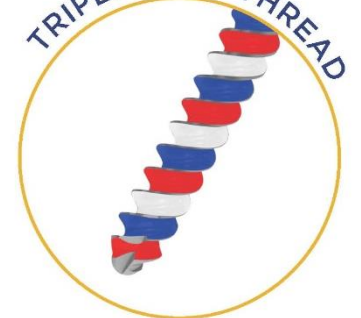
TITANIUM TULIP



SELF-STARTING TIP



TRIPLE LEAD THREAD



*Discover the Difference*



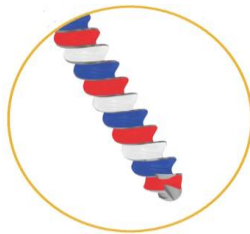
# REFORM® Ti PEDICLE SCREW

**Polyaxial Screws** provide 30° angulation in all planes for intraoperative flexibility

**Modified Proximal Tapered Thread** design increases bone screw interface, enhancing pull-out strength while reducing insertion torque

**Triple Lead Thread** allows for efficient screw delivery

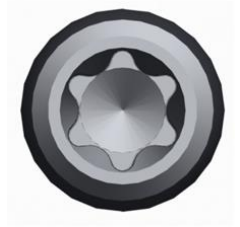
**Self Starting Thread Tip** allows for more immediate bone engagement, reliable insertion



**Low Profile Titanium Tulip** increases space for fusion while decreasing potential risk of adjacent segment facet impingement



**Hexalobular Drive Fittings** on Bone Screw and Locking Cap reduces incidence of toggle and stripping



**Square Threaded Locking Cap** geometry reduces risk of cross threading

**Full complement of offset connectors, dominoes, hooks and cross connectors** increase procedure flexibility



## Reform Ti Sizing

4.5mm Diameter	5.5mm Diameter	6.5mm Diameter	7.5mm Diameter	8.5mm Diameter	9.5mm Diameter
25mm	30mm	30mm	35mm	40mm	60mm
30mm	35mm	35mm	40mm	45mm	70mm
35mm	40mm	40mm	45mm	50mm	80mm
40mm	45mm	45mm	50mm	55mm	
45mm	50mm	50mm	55mm	60mm	
		55mm		70mm	
				80mm	

## Reform Rod Sizing – 5.5mm ø

Ti Straight	Ti Curved	CoCr Straight	CoCr Curved
80mm	35-80mm (5mm)	80mm	35-80mm (5mm)
100mm	90-120mm (10mm)	100mm	90-120mm (10mm)
120mm		120mm	
200mm		200mm	
300mm		300mm	
400mm		400mm	
500mm		500mm	

**Precision Spine, Inc.**  
 2050 Executive Drive, Pearl, MS 39208  
 Customer Service: 1.888.241.4773  
 Phone: 601.420.4244  
 Toll Free: 877.780.4370  
 Fax: 601.420.5501  
[www.precisionspineinc.com](http://www.precisionspineinc.com)



CE0086