

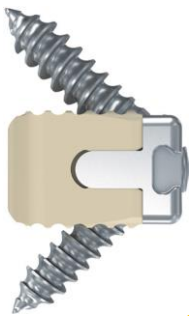
PRECISION SPINE VAULT[®] C ACDF SYSTEM

ZERO PROFILE MODULAR SYSTEM

The Vault[®] C Anterior Cervical Discectomy and Fusion System (ACDF) is a zero profile, modular system featuring a titanium anterior cervical plate with an integrated, one step locking mechanism and a snap fit PEEK-OPTIMA[®]* spacer. The system is designed to restore sagittal profile while providing anterior column support to enhance the fusion process. A maximum screw trajectory of 42° allows for greater bone purchase and stability, and the system has both self-drilling and blunt-tip self tapping screws. The Vault C offers a larger graft window with three available footprints and two lordotic options to easily accommodate varying anatomies. Custom ergonomic instrumentation complements implants for greater surgeon comfort and ease of use.



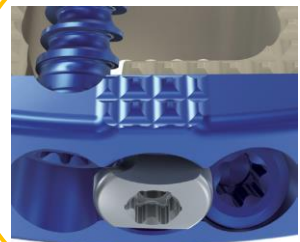
42° SCREW ANGULATION



LARGER GRAFT WINDOW



ONE STEP LOCKING MECHANISM



PRECISION SPINE[®]

Discover the Difference

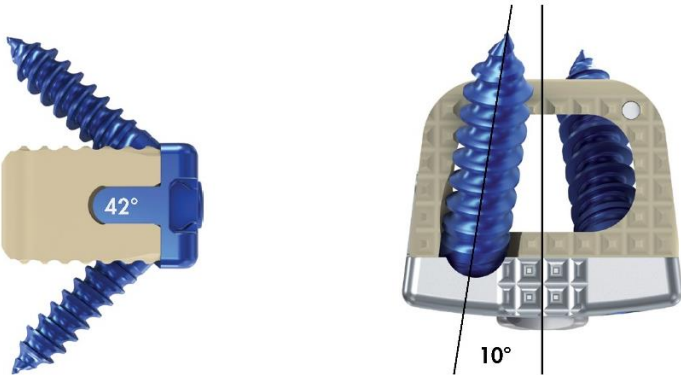


VAULT® C ACDF SYSTEM



Three Footprints available to accommodate varying anatomy. **Available Heights** range from 6-12mm in one mm increments. **Larger Graft Capacity** with the modular plate design.

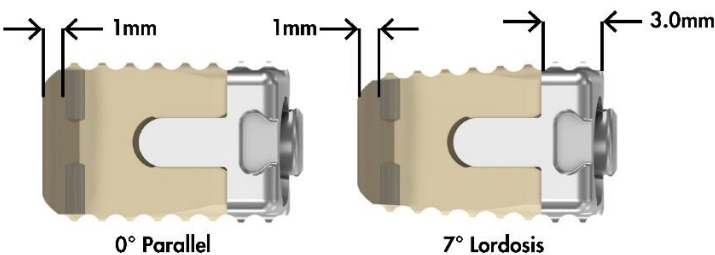
Vault™ C Footprint W x D x H	Bone Graft Vault C	Volume (cc) Competitor A**	% Greater
14 x 12 x 6mm	0.32	0.27	19.00%
14 x 12 x 7mm	0.37	0.32	17.39%
14 x 12 x 8mm	0.42	0.36	16.17%
14 x 12 x 9mm	0.47	0.41	14.93%
14 x 12 x 10mm	0.52	0.46	14.21%
14 x 12 x 11mm	0.57	0.50	13.61%
14 x 12 x 12mm	0.62	0.55	12.89%



Maximum 42° Screw Trajectory with a nominal angle of 35° cephalad/caudal and 10° medial for optimal bone purchase and stability. **One Step Integrated Locking Cap** provides easy, secure interlock.



Optional Open or Closed Drill Guides provide ideal visualization and control.

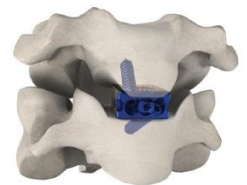


Two Lordotic Options 0° parallel or 7° lordosis. **Two Tantalum Markers** to easily identify landmarks on x-ray.

*PEEK-OPTIMA® polymer from INVIBIO®
**Data on file



Self-Tapping Screws In Two Options Self-Drilling and Blunt-Tip come in 3.5 or 4.0 diameter, and 12, 14, 15 and 17mm lengths.



Zero Profile Design

Precision Spine, Inc.
2050 Executive Drive, Pearl, MS 39208
Customer Service: 1.888.241.4773
Phone: 601.420.4244
Toll Free: 877.780.4370
Fax: 601.420.5501
www.precisionspineinc.com

Caution: Federal (USA) law restricts these devices to sale by, or on the order of, a physician.
PEEK-OPTIMA® polymer from Invibio®
Vault® and Precision Spine® are trademarks of Precision Spine, Inc.
Copyright 2018 Precision Spine, Inc. All rights reserved. P/N LBL-FB-022 Rev B 07/2018

